

Thursday 21st January 2021

Can I use line drawing techniques to create a
cityscape?

Today we are going to be exploring different ways of creating a cityscape.

Depending on what you have available at home!

Black pen (biro / ink / felt tip / fineline)

Watercolours (pencils or paint)



This is an ink /
line drawing.

Where do you
think it is of?



This is an ink drawing of a cityscape.
The artist has used lines and patterns to create detail in the buildings.

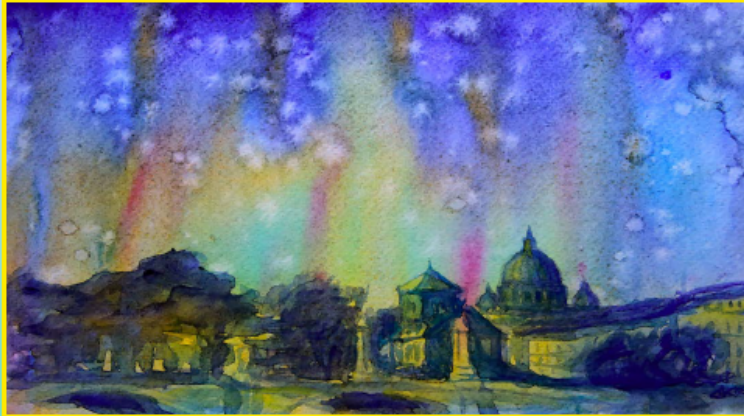
It is of Times Square in New York





This is a
watercolour
and ink
drawing.

Where do you
think it is of?



This is a watercolour painting
of a cityscape.
The artist has used blended
colours and shading to create
the cityscape.



Artists draw exact representations of cities using ink so their audience can determine which city is being represented.

People sometimes use these drawings as a reference. If they want to visit the city they would know what to expect.

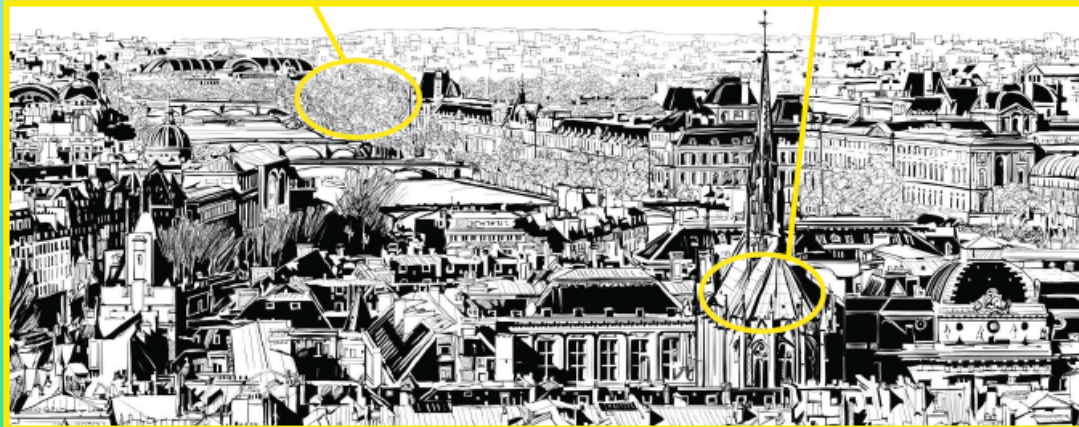




Look at this cityscape.
What patterns can you see?
What lines and shapes can you see?

Swirly, curvy lines
have been used here
to create trees.

Square shapes have been
used to show tiles on the
roof of the church.



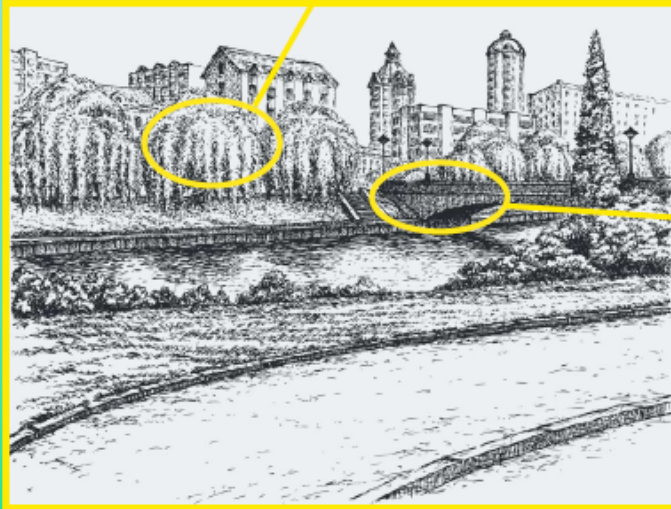
Look at this
cityscape.

What
patterns can
you see?

What lines
and shapes
can you see?



Lines drawn in different directions have made the tree look like it has leaves.



Rectangle shapes with curved lines over the top have made an interesting effect on the bridge.

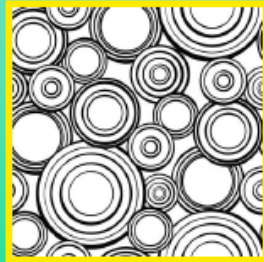
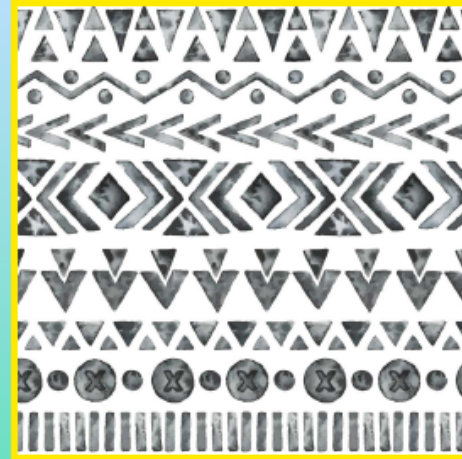
Look at this
cityscape.

What
patterns can
you see?

What lines
and shapes
can you see?



Here are some examples of patterns you could use in your cityscapes.
You might like to use the internet to research some for yourself!



Your task today is to choose a cityscape to create a line drawing of.

Think about the different techniques to create patterns and effects.

